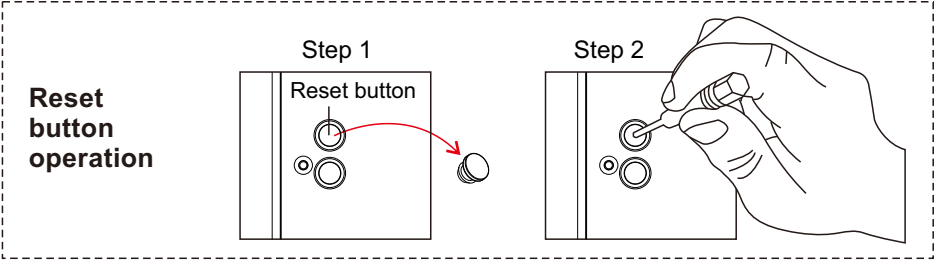
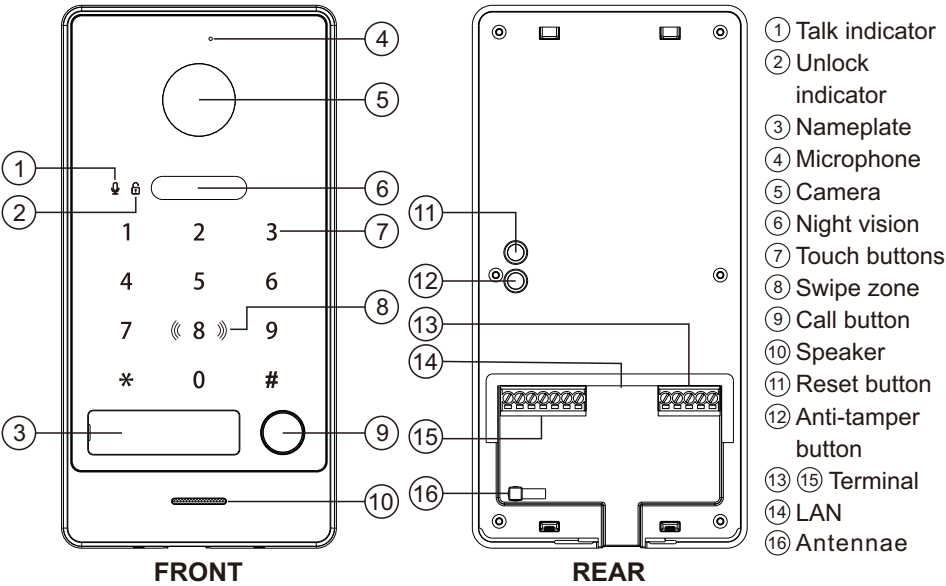


Appearance

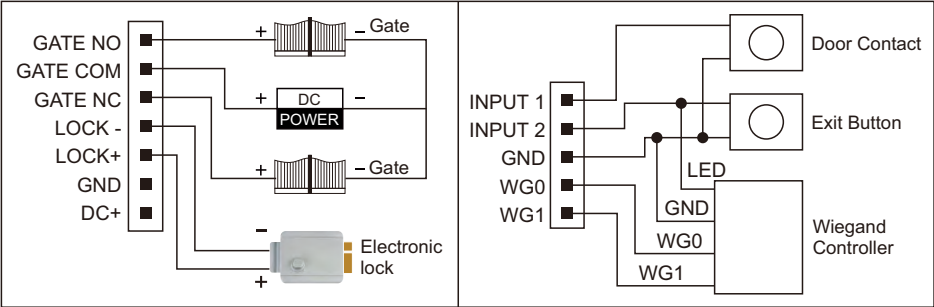


Note: To restore factory settings, press and hold the RESET button until the light turns on and a beep is heard.

Important Notice

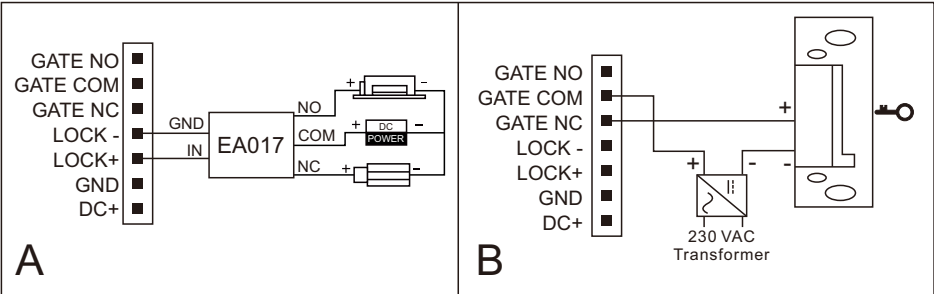
- **Product Updates:** Subject to change without notice.
- **Safety Responsibility:** The company is not liable for accidents caused by improper use.
- **User Guide:** Read this guide carefully (especially safety precautions) and follow the instructions.
- **Reference Only:** In case of discrepancies, the actual product prevails.

Terminal Definitions



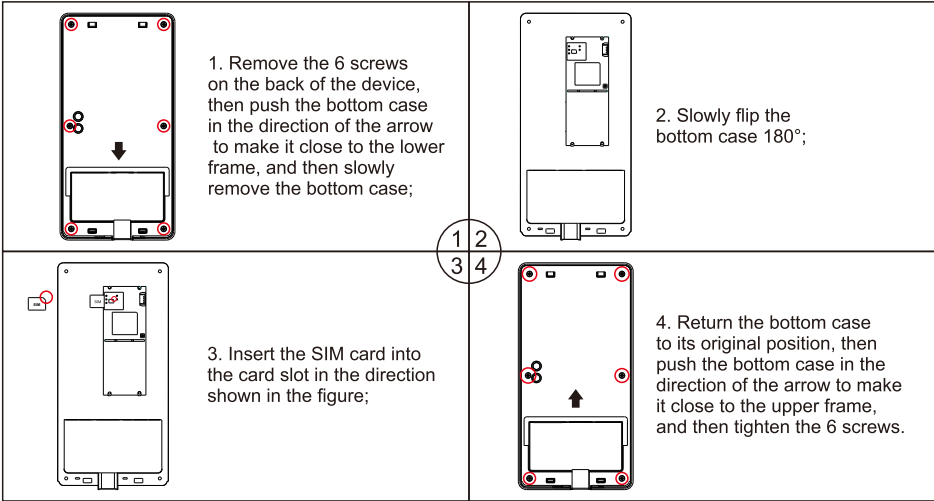
Important Notice

If the power supply to the lock exceeds 12V/0.7A, it is necessary to connect an external 12V power supply according to the diagram A, or diagram B - in this case.

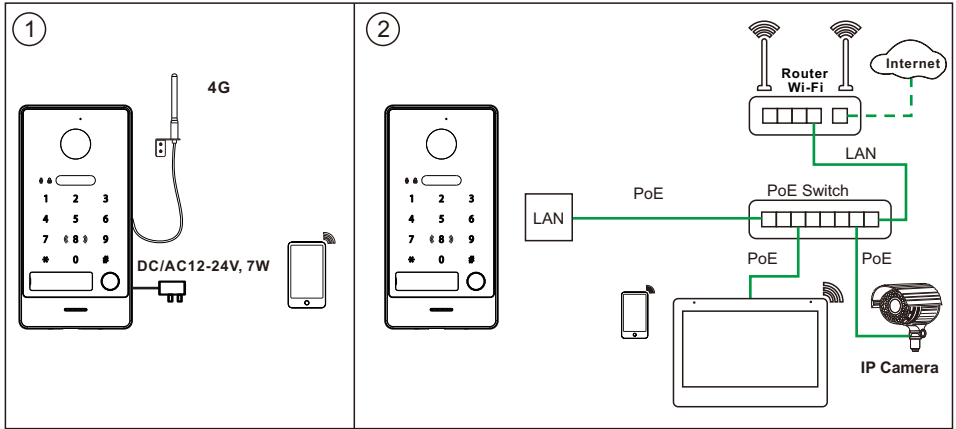


Inserting SIM Card

If you plan to use your own SIM card, follow the steps below to install it.



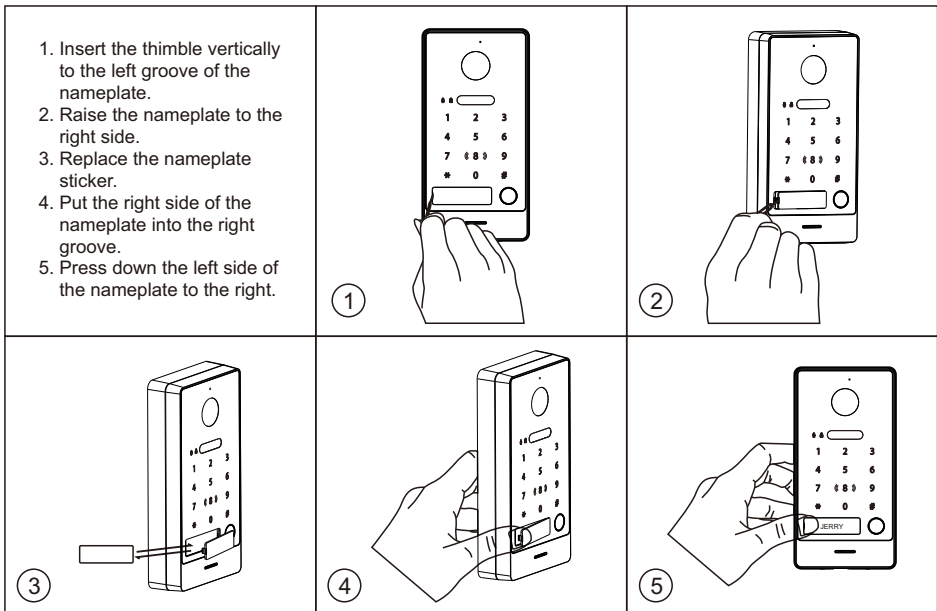
Wiring Diagram



Note:

1. When the Panel is powered on for the first time, it will automatically activate the data plan of the eSIM card.
2. When connecting to the Tuya App via a 4G network, it will consume data from the eSIM card or SIM card; when connecting through the router network, it does not require eSIM card or SIM card data.

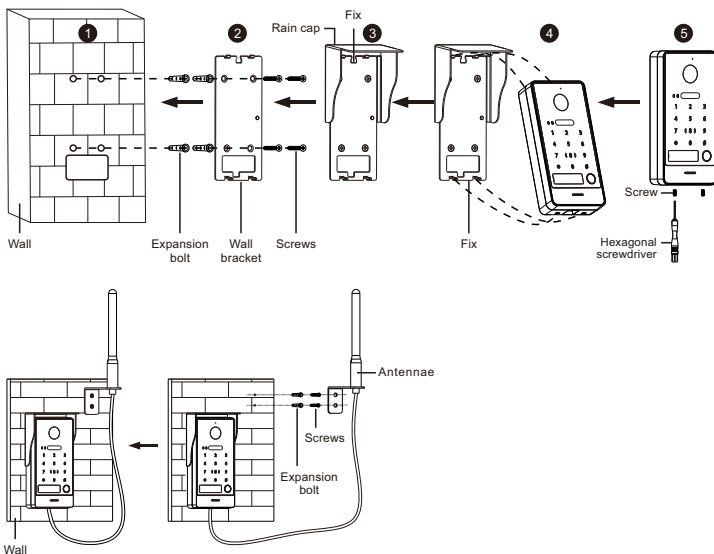
Placing the Name Plate



Installation Guide

1. Drill screw and cable holes according to the wall bracket.
2. Secure the wall bracket on the wall with 4 supplied screws according to the screw holes.
3. The rain cover is placed in the upper end of the wall bracket.
4. Install the door station to the wall bracket.
5. Fix the device on the wall bracket with the set screw.

Remark: Apply silica gel to gaps between the device and the wall. Liquid sodium silicate is recommended.



Card Management

IMPORTANT

- After powering on the door station for the first time, press the “RESET” button briefly.
- The button light will blink, and the speaker will beep.
- Swipe an RFID card to authorize it as the master card (a beep confirms success).
- The master card cannot unlock the door but is required for adding or removing user cards. Keep it safe.

User Card Registration

- Swipe the master card once.
- Swipe an RFID card to register it as a user card (a beep confirms success).
- Continue swiping additional RFID cards to register more user cards.
- Swipe a registered user card again to exit setup mode.

Deleting Master and User Cards

a.Delete All Cards Using Master Card

- Swipe the master card 4 times in a row.
- All user cards and the master card will be deleted.
- The button backlight will blink, and the speaker will beep continuously.

b.Delete All Cards Without Master Card

- If the master card is lost, press the “RESET” button on the rear side.
- This will delete the master card and all user cards.

Notes

- You can register up to 1000 user cards.
- The card reading distance is less than 2cm.
- The door station exits setup mode automatically after 30 seconds of inactivity.
- Swiping an unregistered card will result in two beeps, and the lock will not open.

Password Operation

Default Passwords

- Management Password: 000000
- Unlock Password: 123456.

Changing the Settings Password

- **Access Settings:** Enter * [Current Management Password] #.
- **Indicator Lights:** Verify that the talk and unlock lights flash continuously.
- **Enter New Password:** Input * [New Management Password] # twice. A confirmation tone will sound if successful.
- **Error Handling:** If an error tone sounds, re-enter * [New Management Password] # twice.
- **Password Length:** Passwords must be 1 to 6 digits. Longer entries will be ignored.
- **Exit Settings:** Briefly press * or wait 30 seconds for automatic exit.

Single-Password Mode

Changing the Unlock Code

- **Access Setup Mode:** Enter * [Management Password] #.
- **Indicator Lights:** Ensure the talk and unlock lights flash continuously.
- **Enter New Code:** Input the new unlock code followed by # twice. A confirmation tone will sound if successful.
- **Error Handling:** If an error tone sounds, re-enter the new unlock code followed by # twice.
- **Code Length:** Unlock codes must be 3 to 6 digits. Longer entries will be ignored.
- **Exit Setup:** Briefly press * or wait 30 seconds for automatic exit.

Door and Gate Unlock Instructions

Door Unlock

- Enter the unlock code followed by the # key.
- When the system is in standby mode, swipe a user card to unlock.

Gate Unlock

- Enter the unlock code followed by the * key.
- When the system is in standby mode, press * and swipe a user card to unlock.

Changing Password-Operation Modes

- **Enter Setup Mode:** Enter * [Management Password] #.
- **Switch to Multi-Password Mode:** Enter 4+# [New Management Password] # to enable multi-password mode (up to 99 unlock codes).
- **Switch to Single-Password Mode:** Enter 5+# [New Management Password] # to enable single-password mode (only one unlock code).
- **Default Mode:** The system defaults to single-password mode after initial setup or a reset.

Notes:

- Switching to multi-password mode deletes the single password. Re-register unlock codes for each user.
- Switching to single-password mode deletes all multi-password codes. The default unlock code resets to 123456.

Multi-Password Mode

Registering Unlock Codes

- **Access Setup Mode:** Enter * [Management Password] #.
- **Register Unlock Code:** Enter 1+# [User Number] # [Unlock Code] #.
A confirmation tone will sound if successful.
- **User Number Range:** User numbers can be set from 1 to 99. Any other numbers will not be accepted.
- **Code Length:** Unlock codes must be 3 to 6 digits. Longer entries will be ignored.
- **Error Handling:** If an error tone sounds, re-enter the code starting with 1+#.
- **Exit Setup:** Briefly press * or wait 30 seconds for automatic exit.

Deleting Unlock Codes

- **Access Setup Mode:** Enter * [Management Password] #.
- **Delete a Specific Code:** Enter 2+# [User Number] # . A confirmation tone will sound if successful.
- **Delete All Codes:** Enter 3# [Management Password] #. A confirmation tone will sound if all codes are successfully deleted.
- **Exit Setup:** Briefly press * or wait 30 seconds for automatic exit.

Door and Gate Unlock Instructions

Door Unlock

- Enter [User Number] + # + [Unlock Code] + #.
- When the system is in standby mode, swipe a user card to unlock.

Gate Unlock

- Enter [User Number] + # + [Unlock Code] + *.
- When the system is in standby mode, press * and swipe a user card to unlock.

Wiegand Controller Instructions

The door station functions as a Wiegand card reader. Lock control is managed by the Wiegand manager device.

Card Registration for First Use

- A continuous buzzer will sound.
- Swipe any registered Wiegand card on the door station.
- Upon hearing a beep, the card is successfully registered.
- Wait 30 seconds for the system to exit card reading mode.

Notes:

- To enable app or indoor monitor unlocking, register a card on the Wiegand manager device as a management card. This card cannot function as a user card.
- If the door station has registered a management card before connecting to the Wiegand manager device, reset the door station and repeat the registration process.

Changing the Door Unlock Time

- **Access Setup Mode:** Enter * [Management Password] #.
- **Changing the Door Unlock Time:** Enter 6+# [Number] #. A confirmation tone will sound if successful.
- **Number Range:** The numbers can be set from 1 to 19, which means the Door Unlock Time is 1 to 19S. Any other numbers will not be accepted.
- **Error Handling:** If an error tone sounds, re-enter the code starting with 6+#.
- **Exit Setup:** Briefly press * or wait 30 seconds for automatic exit.
- The default door unlock time is 5S.

Changing the Gate Unlock Time

- **Access Setup Mode:** Enter * [Management Password] #.
- **Changing the Door Unlock Time:** Enter 7+# [Number] #. A confirmation tone will sound if successful.
- **Number Range:** The numbers can be set to 02,05,1,2,3,4,5, which means the Gate Unlock Time is 0.2S,0.5S,1S,2S,3S,3S,4S,5S. Any other numbers will not be accepted.
- **Error Handling:** If an error tone sounds, re-enter the code starting with 7+#.
- **Exit Setup:** Briefly press * or wait 30 seconds for automatic exit.
- The default gate unlock time is 0.2S.

Changing the Door Station Ringtone Duration

- **Access Setup Mode:** Enter * [Management Password] #.
- **Changing the Door Station Ringtone Duration:** Enter 8+# [Number] #. A confirmation tone will sound if successful.
- **Number Range:** The numbers can be set to 0,2,4,6,8,30, which means the Door Station Ringtone Duration is 0S,2S,4S,6S,8S,30S. Any other numbers will not be accepted.
- **Error Handling:** If an error tone sounds, re-enter the code starting with 8+#.
- **Exit Setup:** Briefly press * or wait 30 seconds for automatic exit.
- The default door station ringtone duration is 2S.

Changing the Door Sensor Mode

- **Access Setup Mode:** Enter * [Management Password] #.
- **Changing the Door Sensor Mode:** Enter 9+# [Number] #. A confirmation tone will sound if successful.
- **Number Range:** The numbers can be set to 0,1,2, which means the Door Sensor Mode is OFF, NC, NO. Any other numbers will not be accepted.
- **Error Handling:** If an error tone sounds, re-enter the code starting with 9+#.
- **Exit Setup:** Briefly press * or wait 30 seconds for automatic exit.
- The default door sensor mode is OFF.

Changing the Wiegand Output Format

- **Access Setup Mode:** Enter * [Management Password] #.
- **Changing the Wiegand Output Format:** Enter 10+# [Number] #. A confirmation tone will sound if successful.
- **Number Range:** The Number can be set to 26, 34, which means the Wiegand Output Format is Wiegand 26, Wiegand 34. Any other numbers will not be accepted.
- **Error Handling:** If an error tone sounds, re-enter the code starting with 10+#.
- **Exit Setup:** Briefly press * or wait 30 seconds for automatic exit.
- The default Wiegand output format is Wiegand 26,

Changing the Exit Button Unlock configuration

- **Access Setup Mode:** Enter * [Management Password] #.
- **Changing the Exit Button Unlock configuration:** Enter 11+# [Number] #. A confirmation tone will sound if successful.
- **Number Range:** The Number can be set to 1,2, which means press exit button to unlock the door, gate. Any other numbers will not be accepted.
- **Error Handling:** If an error tone sounds, re-enter the code starting with 8+#.
- **Exit Setup:** Briefly press * or wait 30 seconds for automatic exit.
- The default exit button unlock is the door.

eSIM Card Data Usage Inquiry and Recharge Process (Optional)

1. Enter *[Management Password]# to access the settings mode, then enter 99+#. The panel will send the remaining eSIM data information to the Tuya app's message center.
2. When the data is close to depletion or expires, the system will automatically send a notification to the Tuya app's message center.
3. Use your browser to scan the data information QR code in the Tuya app's message center to access the data recharge store, then select the desired data package to recharge.

APP configuration

1. Install the APP


Search for  **TuyaSmart** in the app store of your phone and install it.

2. Apply account

After the installation is completed, open the app, apply an account and log in.

3. APP configuration guide

3.1 QR Code Connection

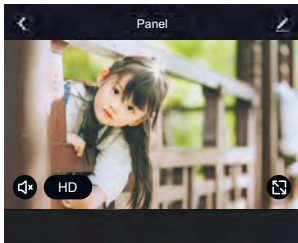
Steps: Open **Tuya Smart App** → Click **Add Device**  → Click **Camera & Lock** → Click **4G Camera** → **QR Code for Camera** → Click **Next** → Point the QR code at the camera → After hearing the prompt, Click **I Heard a Prompt** → Done





Remark:

If the network configuration fails, please reset the device and re-configure the network.




4. Elements of a mobile application


The following options are available on the screen: image quality, mute speaker, maximize screen, enter the Settings menu, and connection signal strength. Save photos and record videos.



-  Enter the "Settings" menu
-  Expand to full screen
-  Setting the video quality (SD or HD)
-  Turning on and off the speaker

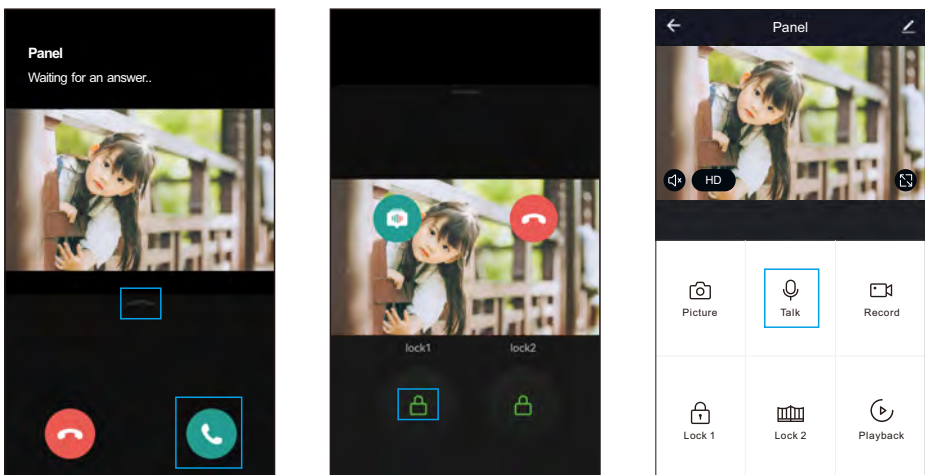
5. Talk and listen mode

If you are not in the app, when a call comes in from the monitor panel with a call forwarding to your phone, a push notification will appear on your smartphone, and clicking on it will open a window with the visitor's video. If you are in the app and a call is in progress, you can answer the call by pressing the  button. Slide  to show the unlock icon, click  to unlock.

In the monitoring interface, click on the icon  to start a talk. you can also change the video quality, take a photo of the visitor, shoot videos, open doors or gates.

Note:

The quality of the connection depends on the quality of the connection between the door station and the router. Should also take into account the congestion of the Wi-Fi network in the place where the router and door station are installed. In addition, the internet in phone must be at least 4G.



6. Add user

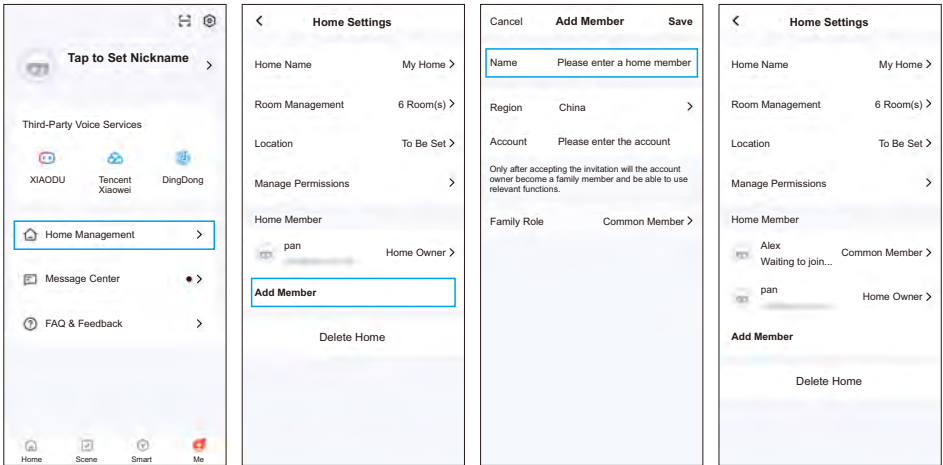
All members of your family can use the device.

Important! The new user must install and register in the app.

6.1 Add a family member

To grant full access to a user, you need to create a home and add the user to this home. After successful addition, the new user can use all devices connected to your home.

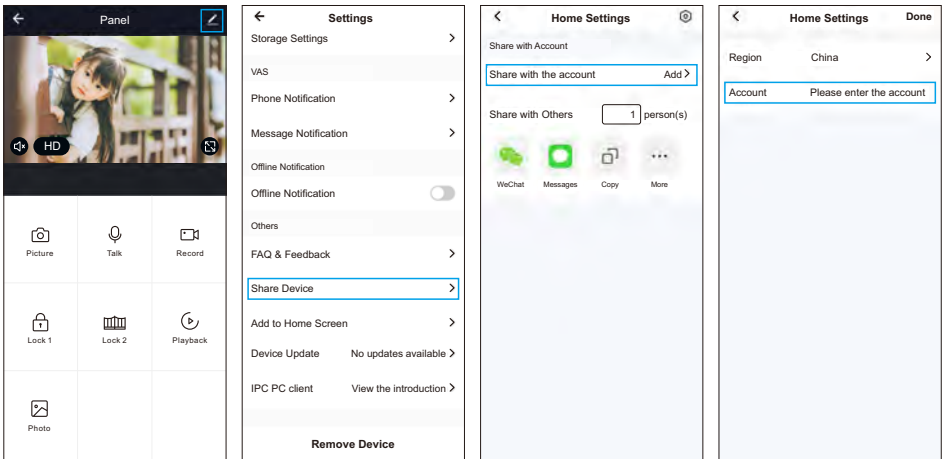
- Go to the home manager
- Click on my house and create your own home name
- Go to the created home
- Add a family member and select app account
- Create a name for the family member and enter their account
- After adding - the new family member must accept the entry in their mobile application



6.2 Add a user to a specific device

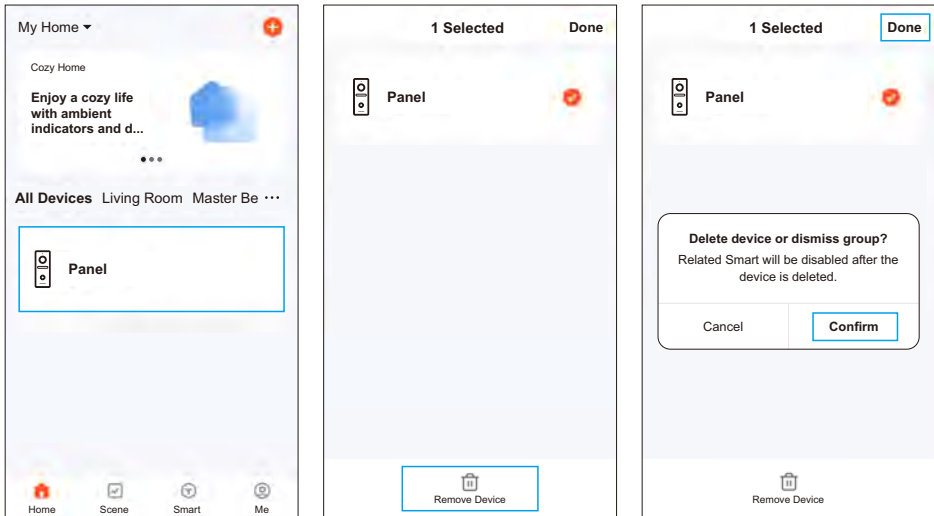
After successful addition, the new user will be able to use only the device to which access has been granted.

In the viewing mode, enter the settings menu → select **Share device** → select **Share with the account** → enter the APP account of the new user



7. Remove the device

Enter the **Tuya Smart** app to remove the device. Press and hold the device you wish to remove on the main page → select **Remove Device** → Click **Confirm** in the pop-up window → **Done**.



Main Specifications

Apartment	1
Angle of view	125° / 150° (Optional)
Night vision	Smart IR
Gate	NO/NC (MAX AC/DC30V 4A)
Output unlocking	NO: MAX DC12V 160mA (Transient current: 700mA-40ms)
Wiegand 26/34 output	Support
Tamper alarm	Support
RFID	125KHZ/Em marine/Supports ISO/IEC 18000-2 type A (ID) (Optional)
	13.56MHZ/Mifare/Supports ISO/IEC 14443 type A 106kb/s (IC) (Optional)
	Number of user cards supported: 1000
	Card reading distance: ≤2cm
Protection grade	IK07; IP65
Power supply	DC/AC12-24V, 7W
Working temperature	-30°C to +60°C (-22°F to +140°F)
Working humidity	10%RH – 90%RH (non-condensing)