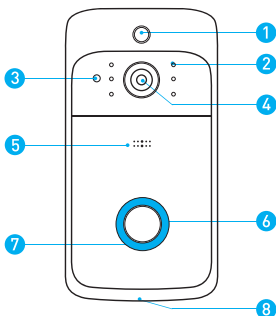


Video Doorbell V5

User Manual

1. The Basics



1. PIR Motion Sensor

2. Infrared LED x 6

3. Light Sensor

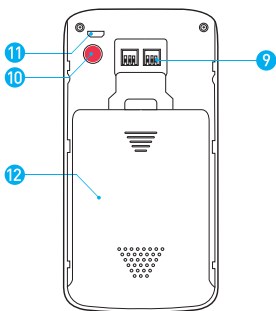
4. 166° HD Camera

5. Microphone

6. Push Button

7. LED Indicator

8. Speaker



V1.0

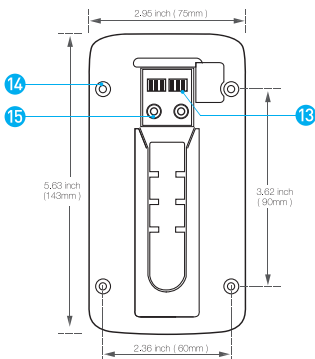
9. AC 8V~24V Power Interface

10. Reset Button

11. Micro USB Port (Battery Charging)

12. Battery door

Mounting Bracket



- 13. Power Contact Base
- 14. Mounting Screw Holes *4
- 15. Wire Terminals

In The Box



Video Doorbell V5



Mounting Bracket



5 Mounting Screws



3 Hardwire /
Security Screws



5 Anchors



User Manual



3 Batteries (Optional)



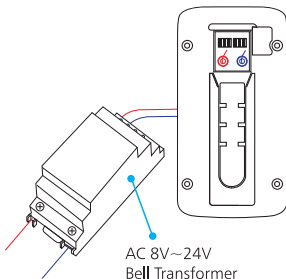
8GB MicroSD
Card (Optional)



Chime (Optional)

2. Hardwiring

Connect the wires coming out of your wall to the screws on the back of your doorbell. Please make sure the red wire can only connect to the left screw and the other wire can only connect to the right screw.



Or Battery Power

Charging Time: 14 hours using 1A USB charger (not included) (via the doorbell micro USB port)

Please fully charge the 18650 batteries before use. With normal use, batteries will last between 6 to 8 months or approximately 1,500 notification events.

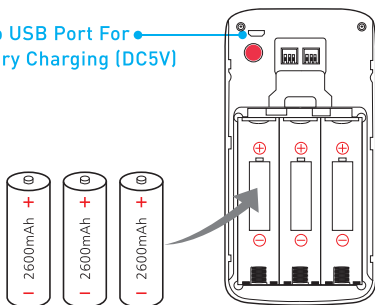
Lots of events:

If your device is capturing an excessive number of events every day, you might need to recharge your battery sooner. Plus, the battery is also drained each time you use the Live View to look or speak through your doorbell. To prevent excessive events, you can adjust your motion settings to a lower sensitivity.

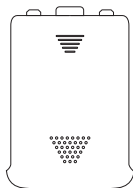
WARNING !

Be sure to put 18650 batteries in the correct direction. Inserting batteries incorrectly will cause permanent damage.

Micro USB Port For
Battery Charging (DC5V)



Rechargeable 18650 Battery



Battery door

3. Set up your video doorbell in the ToSee APP

Step 1

Download the ToSee app. The ToSee app will walk you through setting up and remotely controlling your Doorbell. Search for "ToSee" on the Apple app store or Google Play .



ToSee



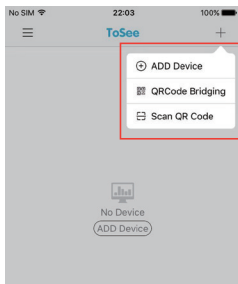
iOS



Android

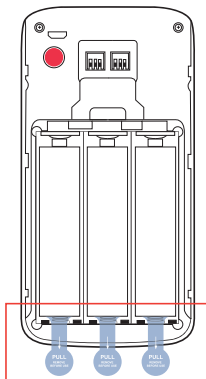
Step 2

Open the ToSee app on your cellphone. Tap "+" then tap "QRCode Bridging". (Or tap "ADD Device" and follow the in-app instructions to set up your camera.)



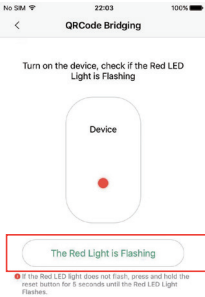
Step 3

Open the battery cover and pull out the insulation tabs.



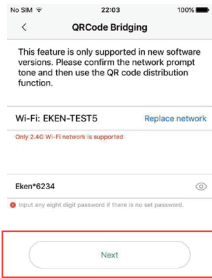
Step 4

Tap “The Red Light is Flashing”.



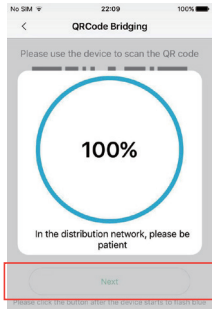
Step 5

Find the name of your WiFi network and tap on it. Enter your WiFi password, then tap “Next”.



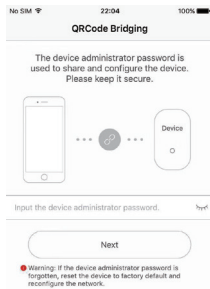
Step 6

Scan the QR code with your doorbell camera, and keep your phone at a distance of about 15-20cm (6-8 inches). You’ll hear “Joined the network successfully” and then tap “Next”.



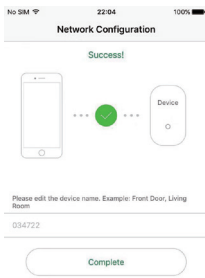
Step 7

Enter your device administrator password, then tap "Next".



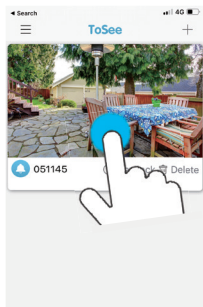
Step 8

Enter your device name and tap "Complete".



Step 9

Tap the doorbell Live View.
If you can see the Live View,
you're all set!

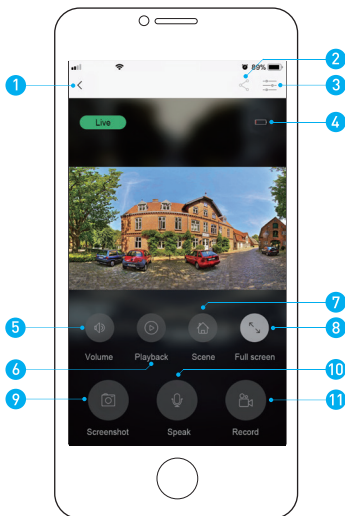


NOTICE:

Be sure to turn on push notifications on your phone.

1. Navigate to Settings -> Notifications -> ON
2. A list of apps that support push notifications will appear.
3. Tap the ToSee and choose your options.

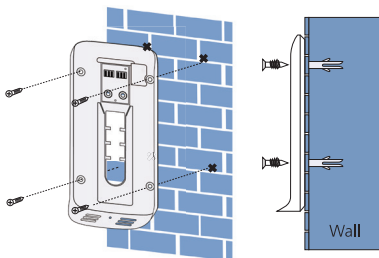
4. App Live View Interface



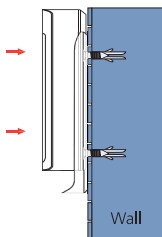
- | | |
|-------------|----------------------|
| 1. Back | 7. Video effects |
| 2. Share | 8. Full screen |
| 3. Settings | 9. Screenshot |
| 4. Battery | 10. Talk to visitors |
| 5. Volume | 11. Record |
| 6. Playback | |

5. Install Your Video Doorbell On The Wall

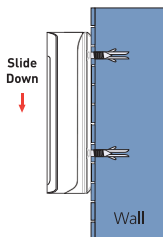
Mark 4 drill holes and use a bit to drill holes in your wall and insert the anchors. Secure your doorbell on the wall with 4 mounting screws and 1 security screw.



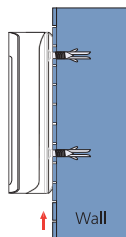
Step 1



Step 2



Step 3



Tighten
The Screw

6. Troubleshooting

Q: How do I RESET the doorbell?

A: Press and hold the RESET Button for 6 seconds.

Q: How do I share the video doorbell with my family?

A: 1. Open the ToSee App:

- From the home page, tap the doorbell Live View.
- Tap the "Share icon" in the top right corner.
- Enter the device administrator password, then tap "Confirm".
- Tap "+".
- Enter the new user's Nickname, then tap "Confirm". You will see a QR code.

2. Open the ToSee App on the new user's cellphone.

- From the home page, tap "+" in the top right corner.
- Tap "Scan QR code", then scan the QR code generated before.
- You will see "Success", then tap "Confirm".
- Enter a Device Name. Tap "Confirm" and you're all set!

Q: How do I adjust PIR motion detection sensitivity?

A: 1. From the device list page, tap the "Live view."

2. Tap "Settings" in the top right corner.

3. Tap "Motion Detection Sensitivity."

PIR Motion Detection Sensitivity

- PIR Motion Sensor Disabled
- 10-second delay trigger on PIR motion detection
- 5-second delay trigger on PIR motion detection
- No Delay on PIR motion detection

Q: How many users can view the video at the same time?

A: Up to 4 users may view the video feed, but only 1 user can use the direct intercom. Both iOS and Android are compatible.

Q: Is 5GHz WiFi supported?

A: No. Only 2.4GHz WiFi is supported.

Q: My signal is poor on my doorbell?

A: Your doorbell maybe too far away from your wireless router or you may have some obstructions in between that reduce signal strength. You might try repositioning your router or getting a signal extender/repeater for your wireless router.

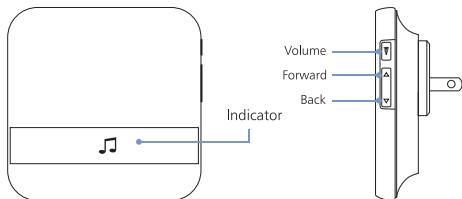
Wireless Chime (Optional)

Connect the video doorbell to the doorbell chime, and get instant alert in your home when someone rings the doorbell. Hear the doorbell chime when you are home, without checking your video doorbell app! The chime plugs into any wall outlet, you can place it anywhere in the home.

NOTICE:

The video doorbell is only compatible with our wireless chime, and not compatible with traditional doorbell chimes. The wireless chime is optional. If it is not installed, doorbell notifications will still go directly to the ToSee app.

1. The Basics

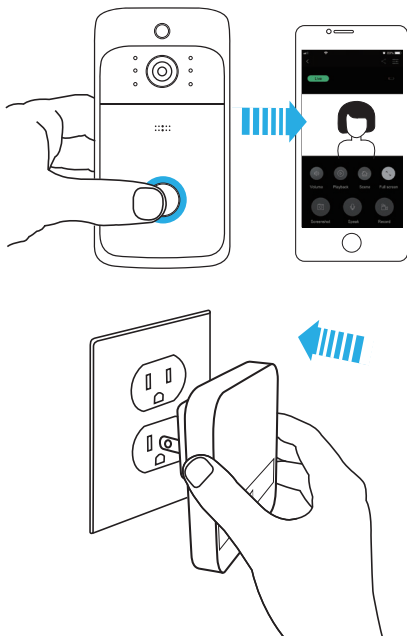


2. Getting Started

Set up your chime with the video doorbell

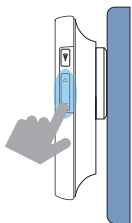
Step 1

Before the setup process, be sure your video doorbell has connected to your phone and plug in your chime.



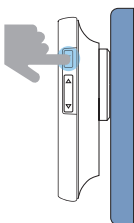
Step 2

Press the forward or back button to cycle through 52 different tunes and select a tune.



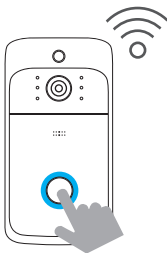
Step 3

Press and hold the volume button for 5 seconds until the blue indicator is ON.



Step 4

Press the doorbell button.



Step 5

Press the doorbell button again, the chime will automatically play the tune you selected.

