

Tenda

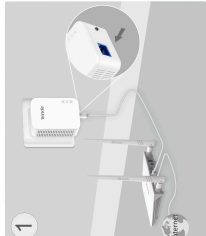
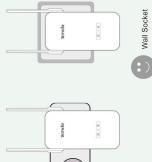
Installation Guide

Ar1008 8-Port Gigabit Wi-Fi Powerline Extender

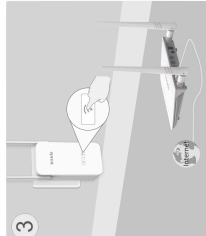
Model: P10

*Aplicatiunile de P2M sunt în stadiu de dezvoltare.

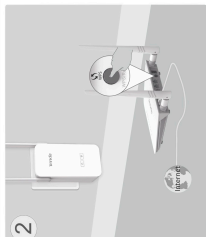
Attention



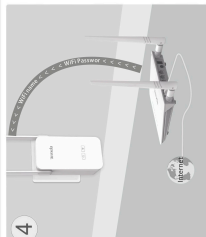
English: Please do not plug the powerline extender into a power strip. It should be plugged into a wall socket.
Portuguese: Não conecte o extensor de rede de linha de energia em uma tomada de energia. Deve ser conectado em uma tomada de energia na parede.
Español: No conecte el extensor de línea de energía en un enchufe de energía. Debe conectarse a un enchufe de energía en la pared.
Italiano: Non collegare l'estensore di linea di energia a una presa di corrente. Deve essere collegato a una presa di corrente sulla parete.
French: Ne branchez pas l'extenseur de ligne d'énergie sur une prise de courant. Il doit être branché sur une prise de courant murale.
Dutch: Sluit de powerline extender niet op een stroomstrip aan. Hij moet worden aangesloten op een wandcontactdoos.



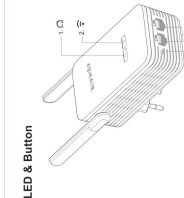
English: Please do not plug the powerline extender into a power strip. It should be plugged into a wall socket.
Portuguese: Não conecte o extensor de rede de linha de energia em uma tomada de energia. Deve ser conectado em uma tomada de energia na parede.
Español: No conecte el extensor de línea de energía en un enchufe de energía. Debe conectarse a un enchufe de energía en la pared.
Română: Nu conectați extensorul de rețea de energie la o priză de curent. Trebuie conectat la o priză de curent pe perete.
Turkish: Lütfen güç hattı uzatma cihazınızı güç kaynağına değil de prizaya sokmayın. Cihazın duvara prizaya sokulması gerekir.
Dutch: Sluit de powerline extender niet op een stroomstrip aan. Hij moet worden aangesloten op een wandcontactdoos.



English: Please do not plug the powerline extender into a power strip. It should be plugged into a wall socket.
Portuguese: Não conecte o extensor de rede de linha de energia em uma tomada de energia. Deve ser conectado em uma tomada de energia na parede.
Español: No conecte el extensor de línea de energía en un enchufe de energía. Debe conectarse a un enchufe de energía en la pared.
Italiano: Non collegare l'estensore di linea di energia a una presa di corrente. Deve essere collegato a una presa di corrente sulla parete.
French: Ne branchez pas l'extenseur de ligne d'énergie sur une prise de courant. Il doit être branché sur une prise de courant murale.
Dutch: Sluit de powerline extender niet op een stroomstrip aan. Hij moet worden aangesloten op een wandcontactdoos.



English: Please do not plug the powerline extender into a power strip. It should be plugged into a wall socket.
Portuguese: Não conecte o extensor de rede de linha de energia em uma tomada de energia. Deve ser conectado em uma tomada de energia na parede.
Español: No conecte el extensor de línea de energía en un enchufe de energía. Debe conectarse a un enchufe de energía en la pared.
Holland: Sluit de powerline extender niet op een stroomstrip aan. Hij moet worden aangesloten op een wandcontactdoos.
Turkish: Lütfen güç hattı uzatma cihazınızı güç kaynağına değil de prizaya sokmayın. Cihazın duvara prizaya sokulması gerekir.
Dutch: Sluit de powerline extender niet op een stroomstrip aan. Hij moet worden aangesloten op een wandcontactdoos.



English: The LED indicator light indicates the power status of the device. The button is used to power on/off the device.

Portuguese: A luz LED indica o status de energia do dispositivo. O botão é usado para ligar/desligar o dispositivo.

Magyar: Az LED jelzőlámpa a készülék tápellátásának állapotát jelzi. A gombot a készülék bekapcsolására/kikapcsolására használják.

CE Mark Warning: This device is not to be used in conjunction with other powerline devices. The use of other powerline devices may void the warranty. This device is not to be used in conjunction with other powerline devices. The use of other powerline devices may void the warranty.

English: The LED indicator light indicates the power status of the device. The button is used to power on/off the device.

Portuguese: A luz LED indica o status de energia do dispositivo. O botão é usado para ligar/desligar o dispositivo.

Magyar: Az LED jelzőlámpa a készülék tápellátásának állapotát jelzi. A gombot a készülék bekapcsolására/kikapcsolására használják.

CE Mark Warning: This device is not to be used in conjunction with other powerline devices. The use of other powerline devices may void the warranty. This device is not to be used in conjunction with other powerline devices. The use of other powerline devices may void the warranty.

English: The LED indicator light indicates the power status of the device. The button is used to power on/off the device.

Portuguese: A luz LED indica o status de energia do dispositivo. O botão é usado para ligar/desligar o dispositivo.

Magyar: Az LED jelzőlámpa a készülék tápellátásának állapotát jelzi. A gombot a készülék bekapcsolására/kikapcsolására használják.

CE Mark Warning: This device is not to be used in conjunction with other powerline devices. The use of other powerline devices may void the warranty. This device is not to be used in conjunction with other powerline devices. The use of other powerline devices may void the warranty.

English: The LED indicator light indicates the power status of the device. The button is used to power on/off the device.

Portuguese: A luz LED indica o status de energia do dispositivo. O botão é usado para ligar/desligar o dispositivo.

Magyar: Az LED jelzőlámpa a készülék tápellátásának állapotát jelzi. A gombot a készülék bekapcsolására/kikapcsolására használják.

CE Mark Warning: This device is not to be used in conjunction with other powerline devices. The use of other powerline devices may void the warranty. This device is not to be used in conjunction with other powerline devices. The use of other powerline devices may void the warranty.

English: The LED indicator light indicates the power status of the device. The button is used to power on/off the device.

Portuguese: A luz LED indica o status de energia do dispositivo. O botão é usado para ligar/desligar o dispositivo.

Magyar: Az LED jelzőlámpa a készülék tápellátásának állapotát jelzi. A gombot a készülék bekapcsolására/kikapcsolására használják.

CE Mark Warning: This device is not to be used in conjunction with other powerline devices. The use of other powerline devices may void the warranty. This device is not to be used in conjunction with other powerline devices. The use of other powerline devices may void the warranty.

English: The LED indicator light indicates the power status of the device. The button is used to power on/off the device.

Portuguese: A luz LED indica o status de energia do dispositivo. O botão é usado para ligar/desligar o dispositivo.

Magyar: Az LED jelzőlámpa a készülék tápellátásának állapotát jelzi. A gombot a készülék bekapcsolására/kikapcsolására használják.

CE Mark Warning: This device is not to be used in conjunction with other powerline devices. The use of other powerline devices may void the warranty. This device is not to be used in conjunction with other powerline devices. The use of other powerline devices may void the warranty.

English: The LED indicator light indicates the power status of the device. The button is used to power on/off the device.

Portuguese: A luz LED indica o status de energia do dispositivo. O botão é usado para ligar/desligar o dispositivo.

Magyar: Az LED jelzőlámpa a készülék tápellátásának állapotát jelzi. A gombot a készülék bekapcsolására/kikapcsolására használják.

CE Mark Warning: This device is not to be used in conjunction with other powerline devices. The use of other powerline devices may void the warranty. This device is not to be used in conjunction with other powerline devices. The use of other powerline devices may void the warranty.